



# SPECIFICATIONS & PARTS

## Zebra® Smart Disk Skimmer

### GS Series - Technical Specifications

Shown: GS4H300 model w/12" (300mm) disk  
 Motor: Refer to charts below  
 Mounting Holes: 7/32" (5.5mm), 2.5" (63.5mm) between centers  
 Discharge Pipes: 1/4" (6.4mm) ID, 4" (10.2cm) long, one for each diverter fitting  
 Shipping Weight: 11 lbs. (5 kg)

### GS Series - Replacement Parts & Accessories

#### Replacement Disks, Wipers, and Collars

**LH Series**  
 DISK-H300 12" (300mm) Disk, 1/4" (6.35mm) thick, temps to 90°F (32°C)  
 DISK-H460 18" (460mm) Disk, 1/4" (6.35mm) thick, temps to 90°F (32°C)  
 DISK-H610 24" (610mm) Disk, 1/4" (6.35mm) thick, temps to 90°F (32°C)  
 LXWIP Wiper set for all Zebra model disk skimmers  
 LXCOL-A Aluminum collar for disk skimmers, 5/16" (7.9mm) opening

**LW Series**  
 DISK-W300 12" (300mm) Disk, 1/2" (12.7mm) thick, temps to 212°F (100°C)  
 DISK-W460 18" (460mm) Disk, 1/2" (12.7mm) thick, temps to 212°F (100°C)  
 DISK-W610 24" (610mm) Disk, 1/2" (12.7mm) thick, temps to 212°F (100°C)  
 LXWIP Wiper set for all Zebra model disk skimmers  
 LXCOL-B Stainless steel collar for disk skimmers, 5/16" (7.9mm) opening

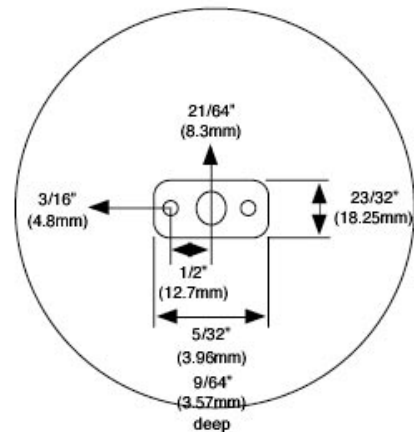
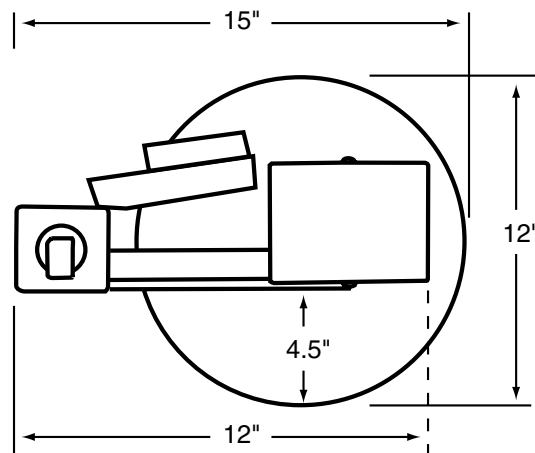
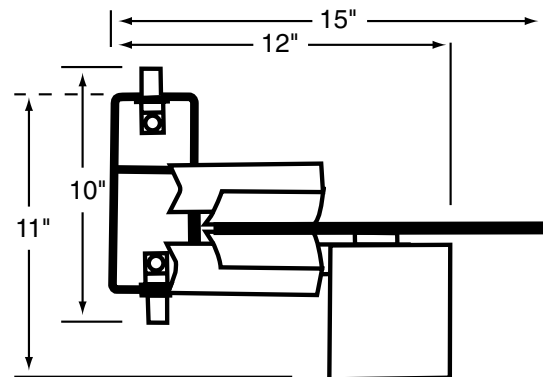
Replacement Motors: Refer to charts below

XETIMER Electrical Timer, 24 hour, 3-settings per day



Model Number	Motor Number
GS4H300	MG07A1
GS4H300E	MG06E1
GS4H460	MG07A1
GS4H460E	MG06E1
GS4H610	MG02A1
GS4H610E	MG02A1
GS4W300	MG07A1
GS4W300E	MG06E1
GS4W460	MG07A1
GS4W460E	MG06E1
GS4W610	MG02A1
GS4W610E	MG02A1

Motor Number	Volts	Hz	LRA	RPM	Watts	HP	Fan
MG07A1	115	60	0.43	7	49	0.065	Y
MG02A1	115	60	0.43	2	49	0.065	Y
MG06E1	220	50	0.22	6	48	0.064	Y



Zebra Skimmers Corporation  
 PO Box 833 Chagrin Falls, OH 44022  
[www.ZebraSkimmers.com](http://www.ZebraSkimmers.com)  
[www.CoolantMaintenance.com](http://www.CoolantMaintenance.com)  
 Toll Free 888-249-4855  
 Phone: 440.349.0141  
 Fax: 440.349.1211

© March 2008 Zebra Skimmers Corp. All rights reserved.

Contact your distributor  
 for more information